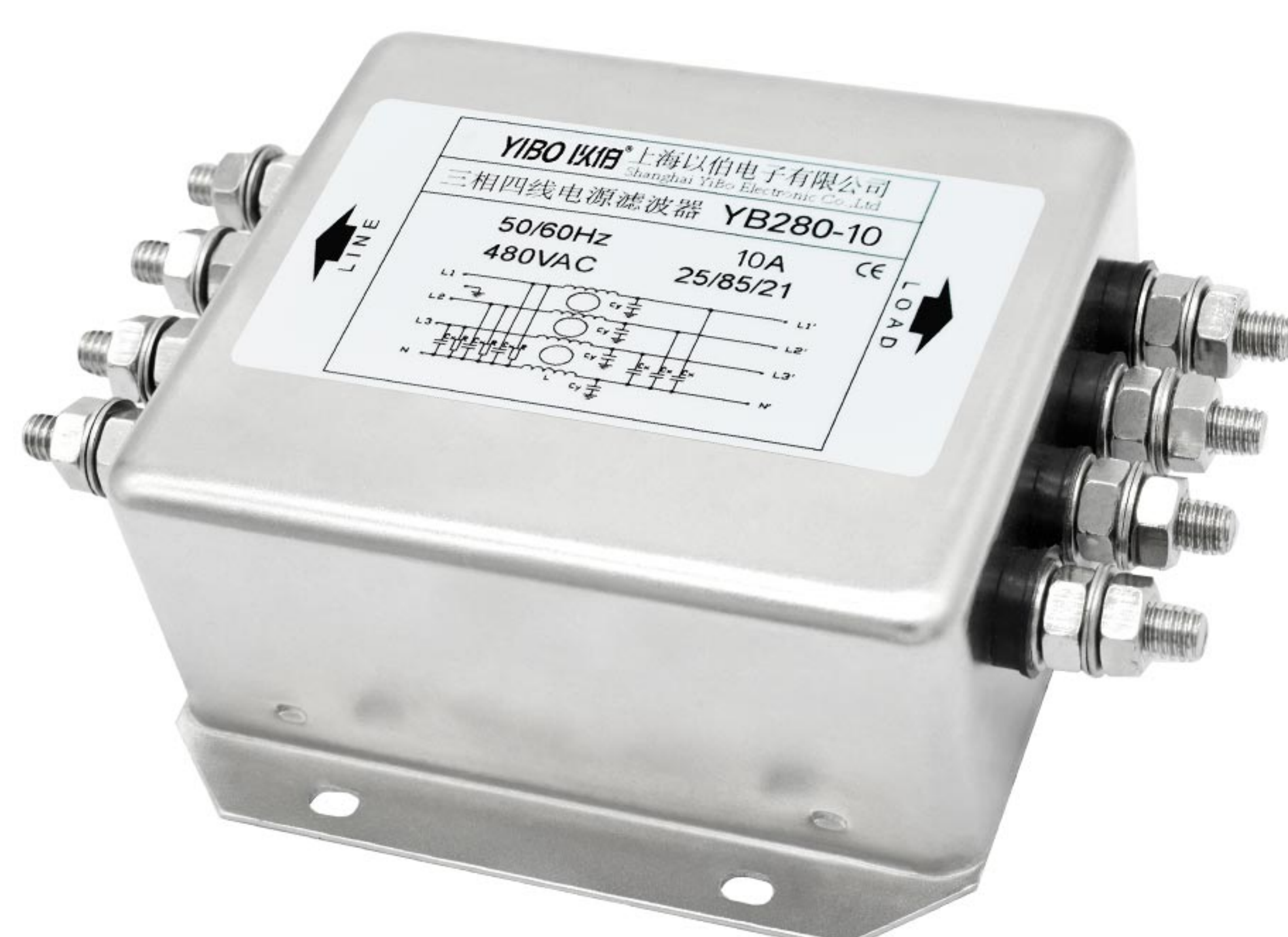


产品及应用 PRODUCTS APPLICATIONS

- ▲ 三相四线电源滤波器，滤波效果优良
- ▲ 优异的高低频滤波特性，泄露电流低
- ▲ 常规通用，体积小，便于安装
- ▲ 广泛应用于开关电源、UPS、商用终端、电子监测等电力电子设备



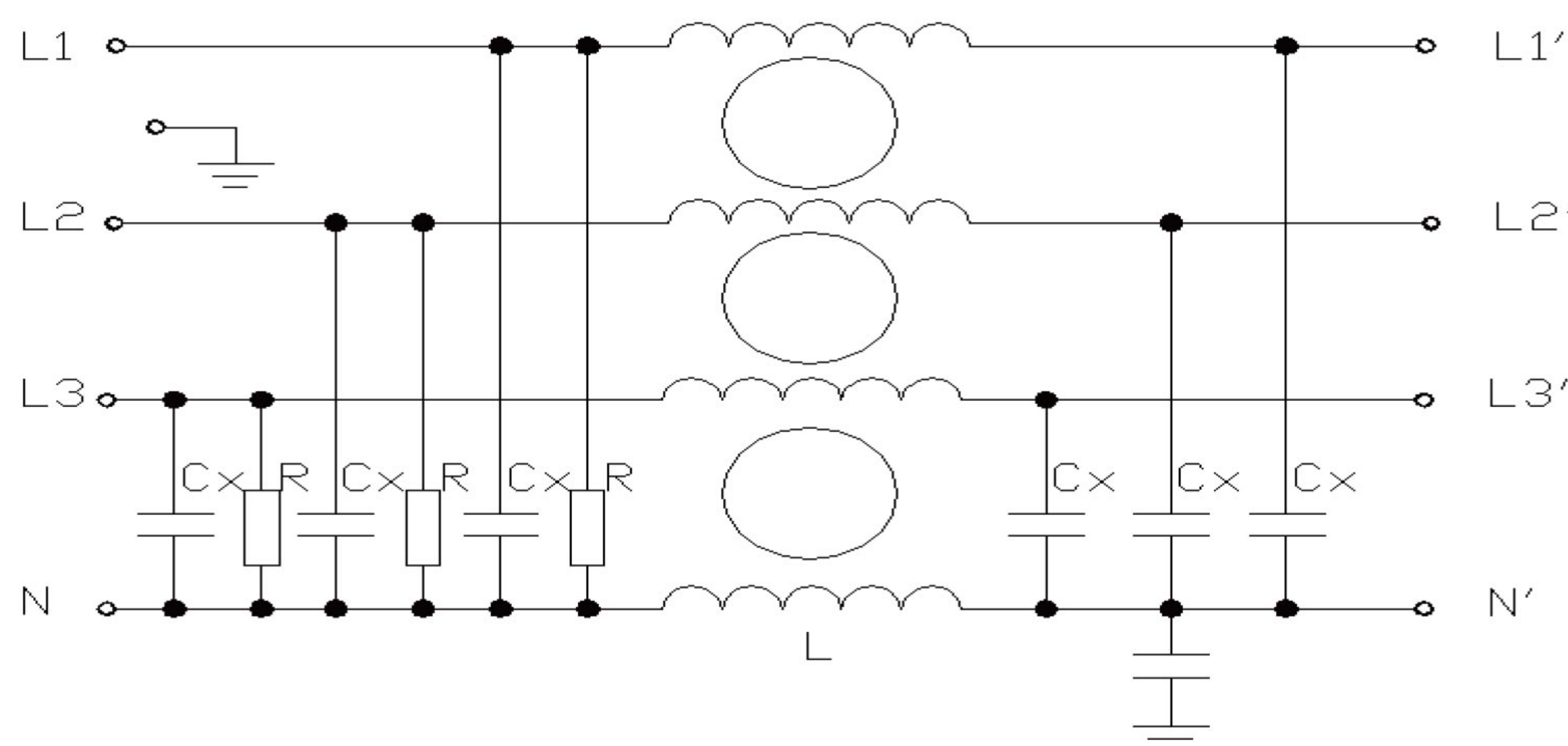
- ▲ Three-phase four-wire power filter, excellent filtering effect
- ▲ Excellent high and low frequency filtering characteristics, low leakage current
- ▲ Conventional general-purpose, small size, easy to install
- ▲ widely used in power supply, UPS, commercial terminals, electronic monitoring, and other power electronic devices

技术参数 SPECIFICATION

最高工作电压 Maximum operating voltage (VAC)	工作频率 Operating frequency Hz	试验电压 Hipot test voltage P-P(VDC) PN-E(VDC)		工作温度 Operating temperature Hz	绝缘电阻 Minimum insulation resistance
480	50/60	2150	2700	-25~+85°C	>200M@500VDC

产品型号 FILTER	端接方式 Connections 螺栓 Bolts	额定电流 Current rating @40°C	外型尺寸 Housing	泄漏电流 Leakage current	电路参数 Components			
					L (mH)	Cx(uF)	Cy(nF)	R(MΩ)
YB280-10	/M	10A	E	<2.2mA	1.0	0.22	4.7	1.0
YB280-20	/M	20A	E	<2.2mA	1.0	0.22	4.7	1.0
YB280-30	/M	30A	E	<2.2mA	0.4	0.47	4.7	1.0
YB280-50	/M	50A	M5	<5.0mA	0.3	0.47	40	0.47
YB280-75	/M	75A	M10	<10mA	0.25	0.47	100	0.47
YB280-100	/M	100A	M10	<10mA	0.2	1.0	100	0.47
YB280-200	/M	200A	M12	<25mA	0.18	1.0	235	0.47

电路原理图 CIRCUIT DIAGRAM



外型尺寸 HOUSING AND DIMENSIONS: (MM)

